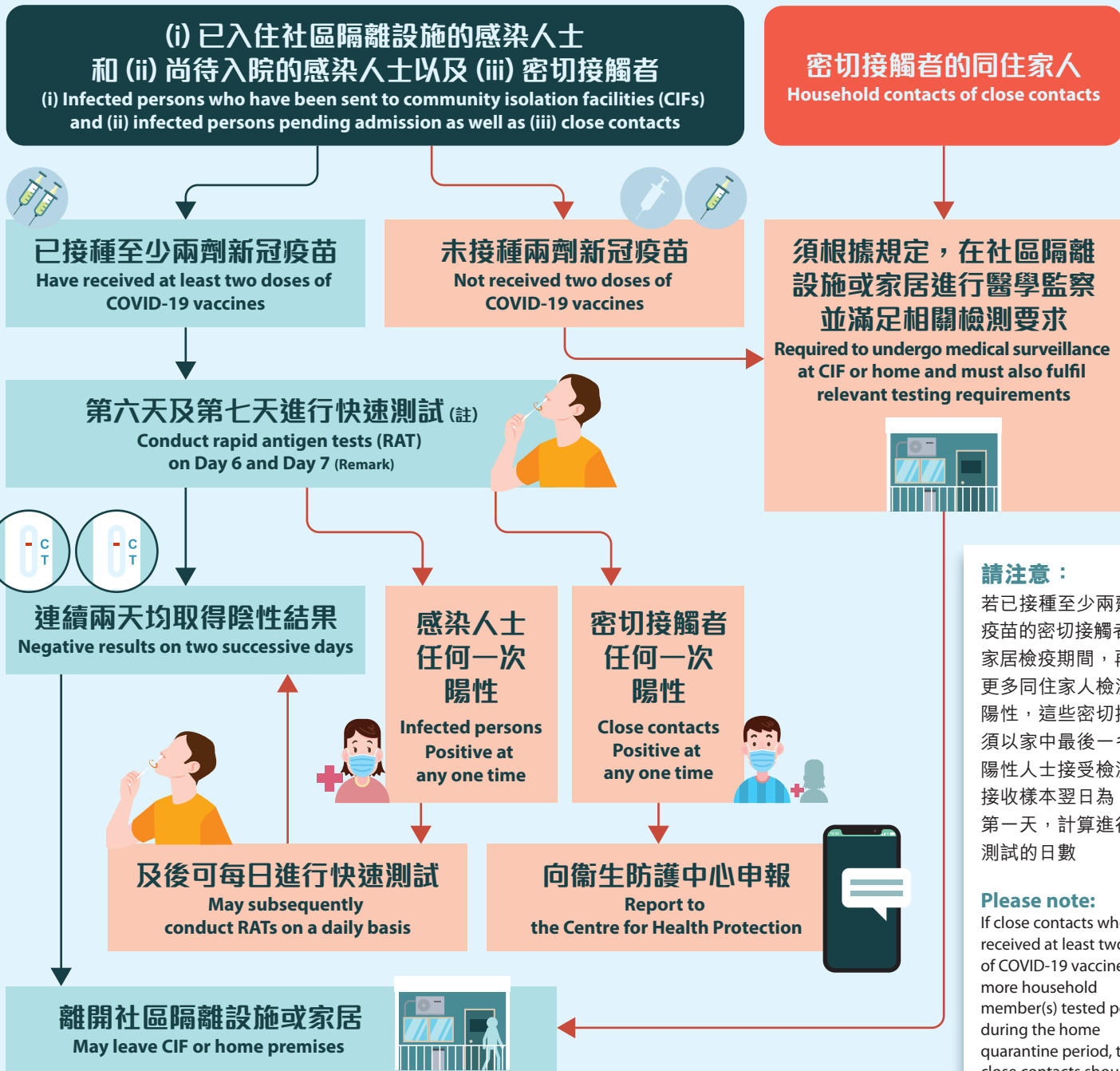


提早完成

隔離和家居檢疫條件

Criteria for Early Discharge from Isolation and Home Quarantine



請注意：

若已接種至少兩劑新冠疫苗的密切接觸者在家居檢疫期間，再有更多同住家人檢測陽性，這些密切接觸者須以家中最後一名檢測陽性人士接受檢測或接收樣本翌日為第一天，計算進行快速測試的日數

Please note:

If close contacts who have received at least two doses of COVID-19 vaccines find more household member(s) tested positive during the home quarantine period, these close contacts should count the day following testing or collection of sample of the last person tested positive at home as Day 1 for the purpose of conducting RATs

註：

感染人士：以接受檢測或接收樣本翌日為第一天；如無接受檢測或接收樣本紀錄，則以收到檢測結果通知當日為第一天

密切接觸者：以同住感染人士接受檢測或接收陽性樣本翌日為第一天；如無接受檢測或接收樣本紀錄，則以同住感染人士收到陽性檢測結果通知當日為第一天

Remark:

The day following testing or collection of sample is counted as Day 1; if there is no such testing or collection record, the day on receiving the test result is counted as Day 1

The day following testing or collection of the positive sample from the infected household is counted as Day 1 of home quarantine. If there is no such testing or collection record, the day on receiving the positive result of the infected household is counted as Day 1

版本日期 Version Date : 2022年3月7日 7 March 2022



衛生防護中心
Centre for Health Protection



更多防疫資訊

For more information on fighting the virus:

www.coronavirus.gov.hk



衛生防護中心Facebook專頁

Centre for Health Protection Facebook Fanpage

fb.com/CentreforHealthProtection



衛生署
Department of Health

衛生署健康教育專線
Health Education Infoline of the Department of Health **2833 0111**